



VBC|STUDIO
— BOSTON —

N AMERICAN ST. DD PACKAGE

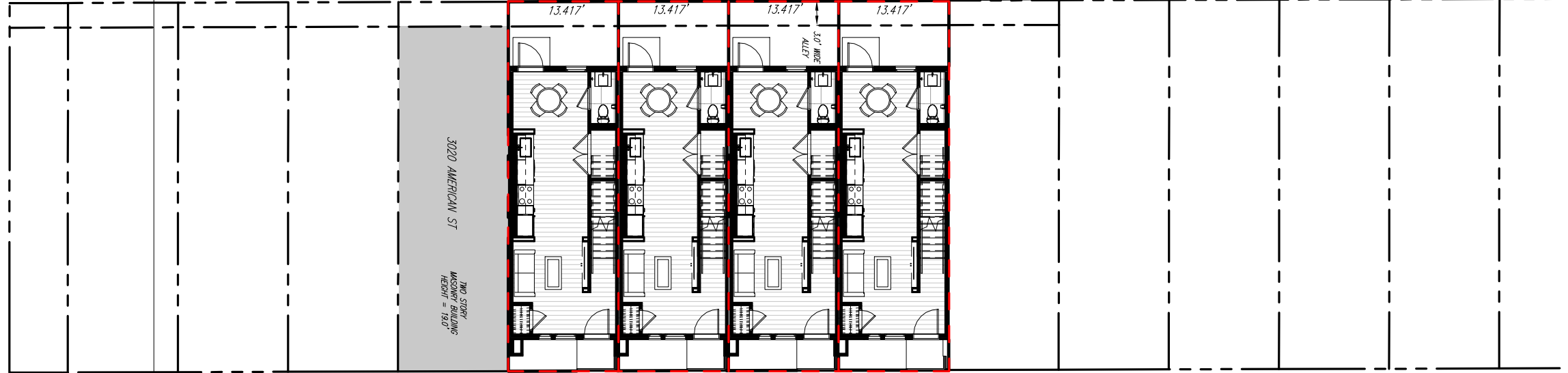
3022-3028 N AMERICAN STREET PHILADELPHIA, PA 19131
FEBRUARY 10, 2021

INDIANA AVENUE

S78°39'00"E

235 W. INDIANA AVE.

S11°08'30"W



3020 AMERICAN ST
TWO STORY
MASONRY BUILDING
HEIGHT = 19.0'

AMERICAN STREET

CONCRETE CURB

STONE CURB

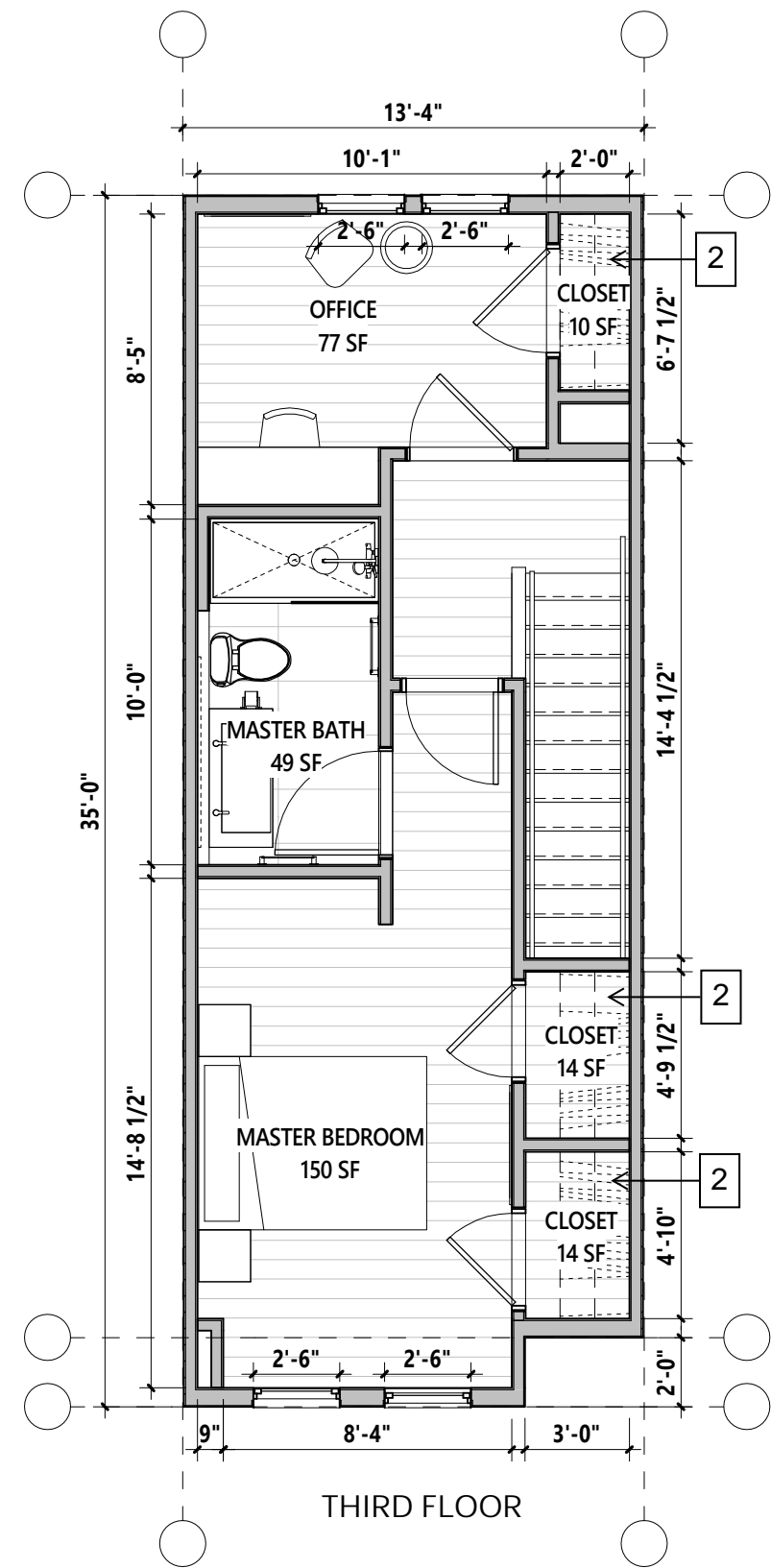
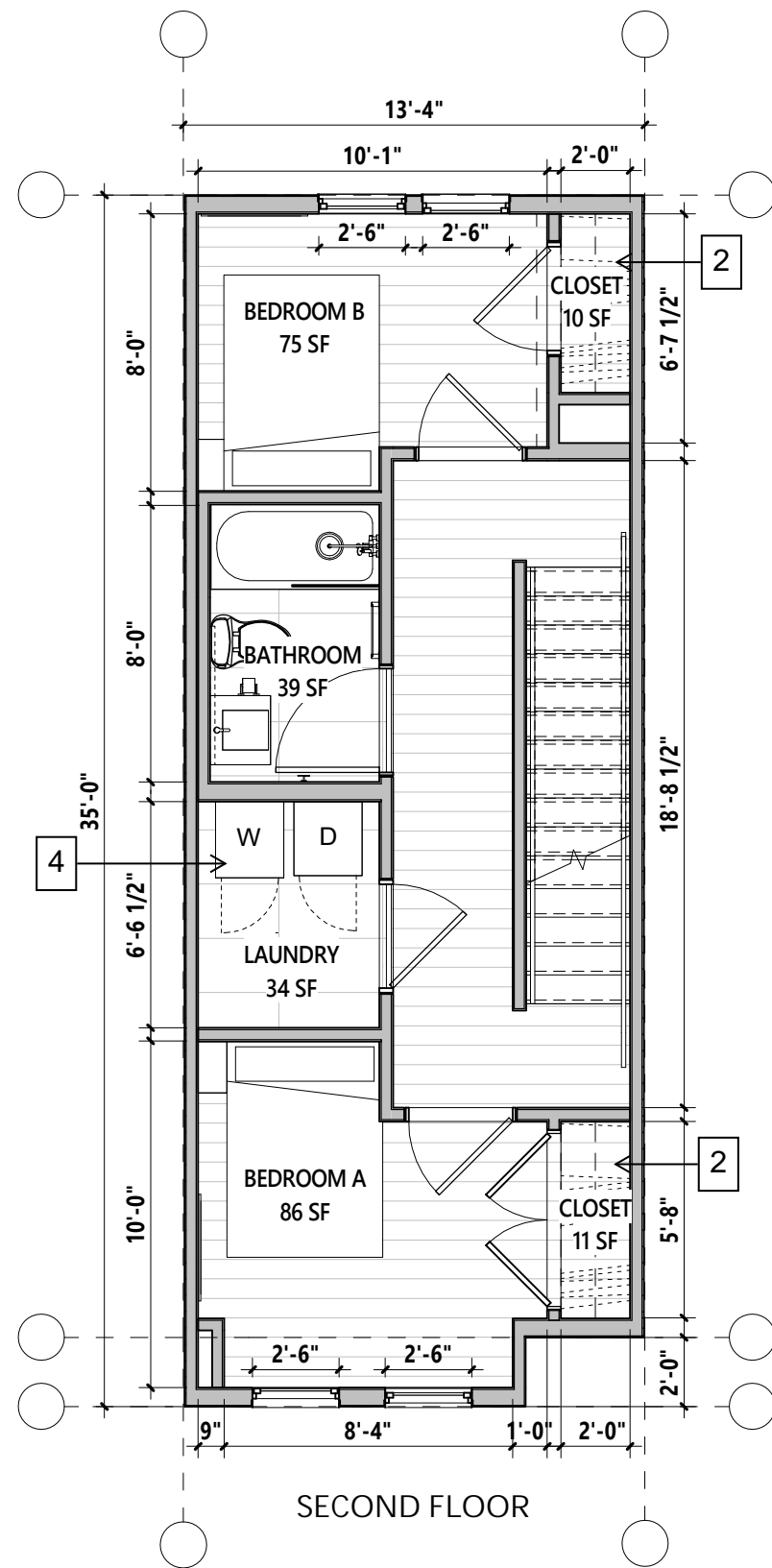
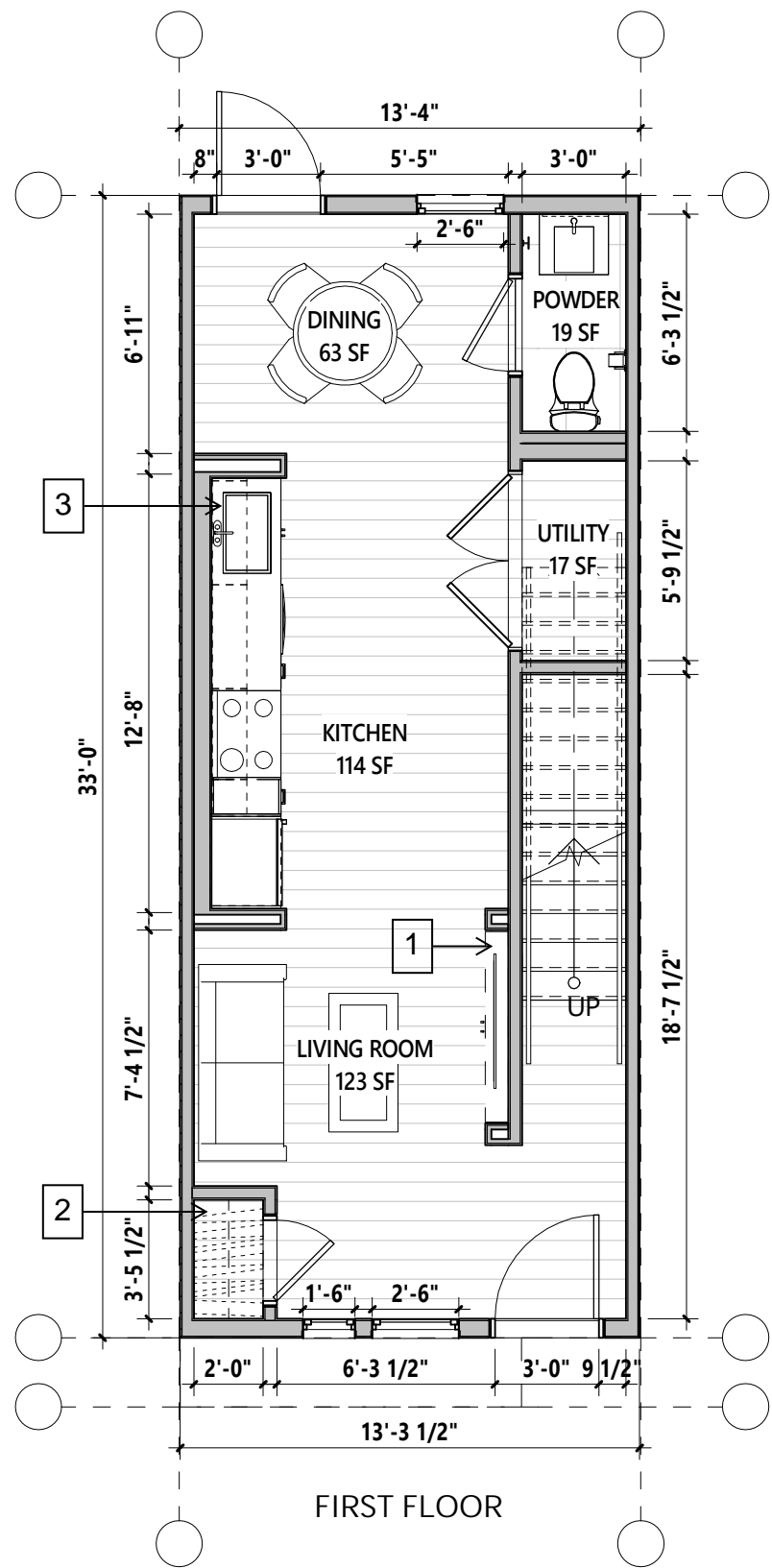
STONE CURB

GURNEY STREET

(30' R/W / 8-14-B / LEGALLY OPEN ON CITY PLAN)

RSA 5 - ZONING REQUIREMENTS

BUILDING DIMENSIONS	REQUIRED
MINIMUM LOT AREA	1,440 SF
MINIMUM LOT WIDTH	16 FT
MAXIMUM OCCUPIED AREA	LOT: INTERMEDIATE 75%; CORNER 80%
MINIMUM FRONT YARD DEPTH	ADJACENT DEPENDENT
MINIMUM SIDE YARD DEPTH	5 FT
MINIMUM REAR YARD DEPTH	9 FT
MAXIMUM HEIGHT	38 FT
RESIDENT PARKING REQUIREMENTS	0



GENERAL NOTES

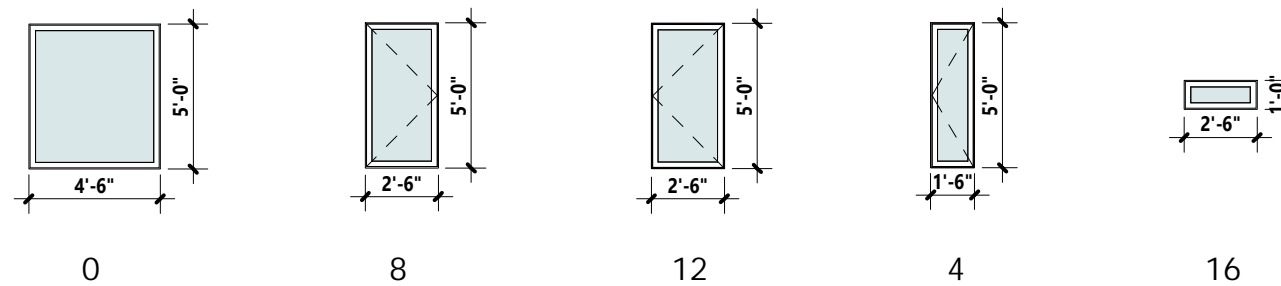
- 1. TELEVISION UNIT WITH BASE STORAGE | SHELF
- 2. WIRE SHELF | STORAGE
- 3. KITCHEN CABINETRY
- 4. SIDE BY SIDE W/D

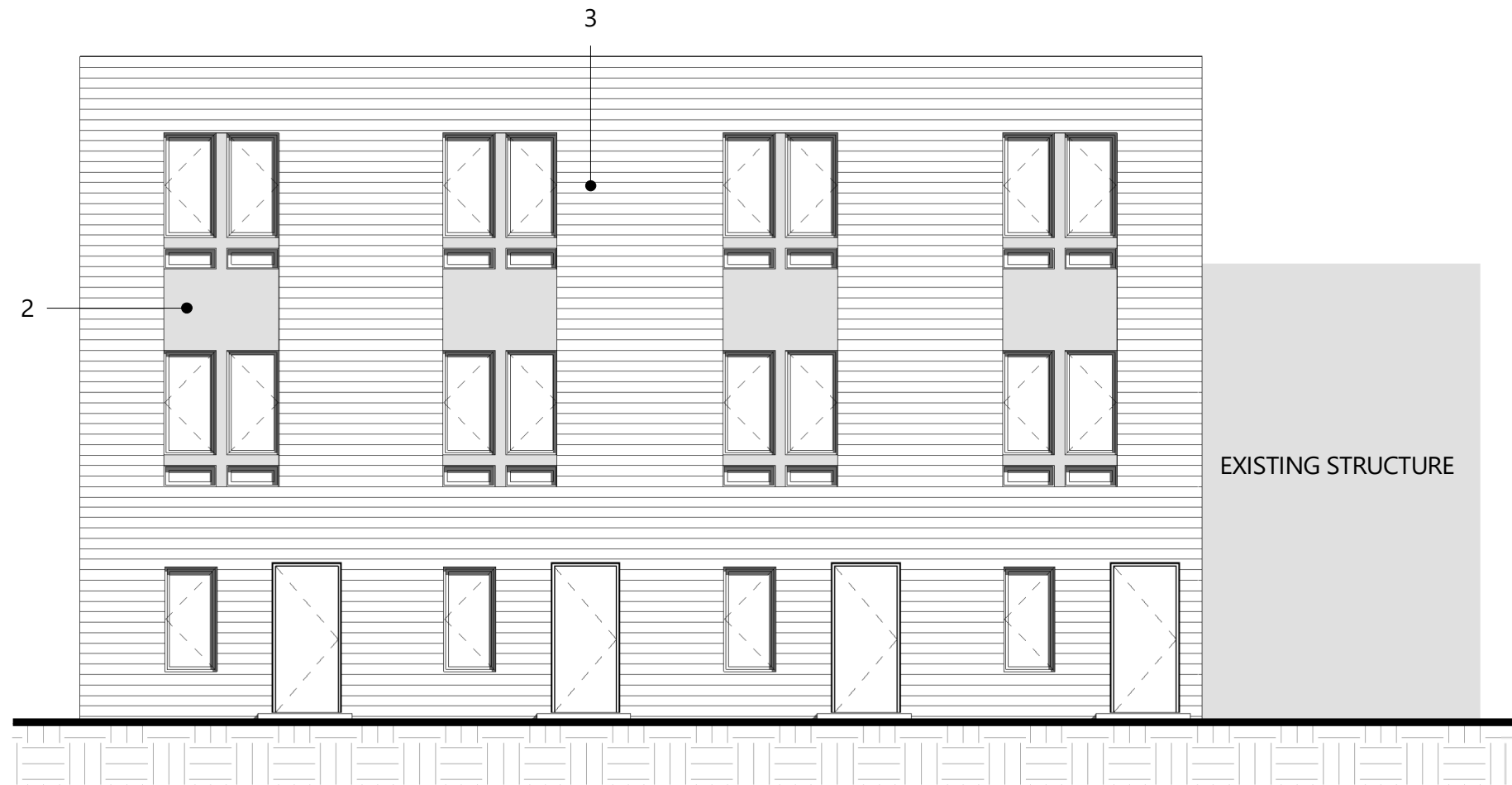


MATERIAL LIST

- 1 STUCCO
- 2 COLORED PANELING
- 3 7" HARDIE LAP SIDING
- 4 STANDARD DEPTH BRICK

WINDOW TOTALS

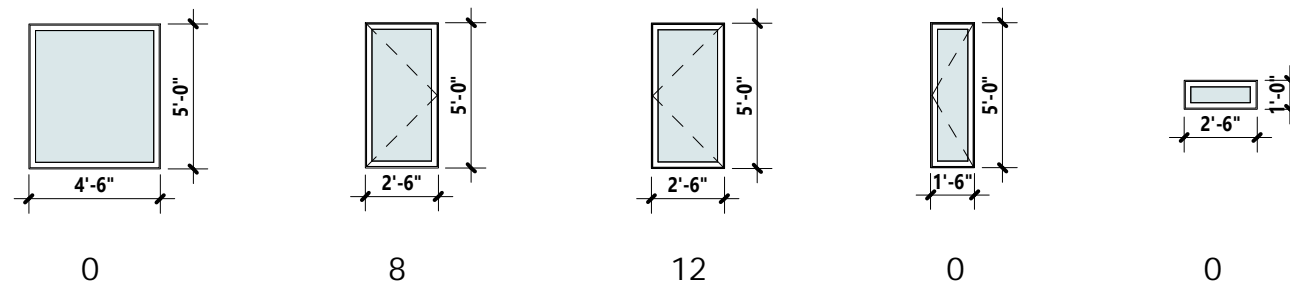


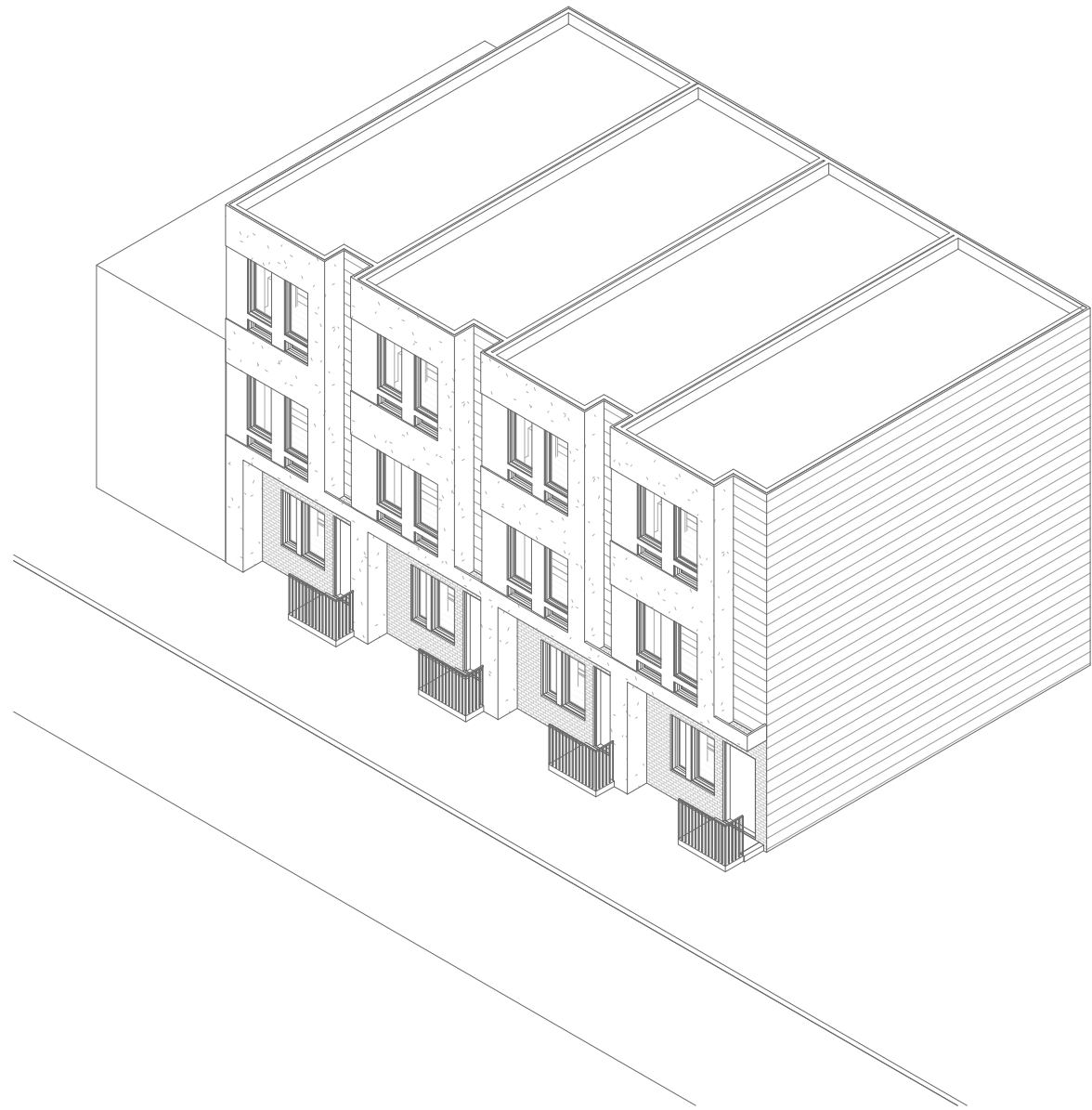


MATERIAL LIST

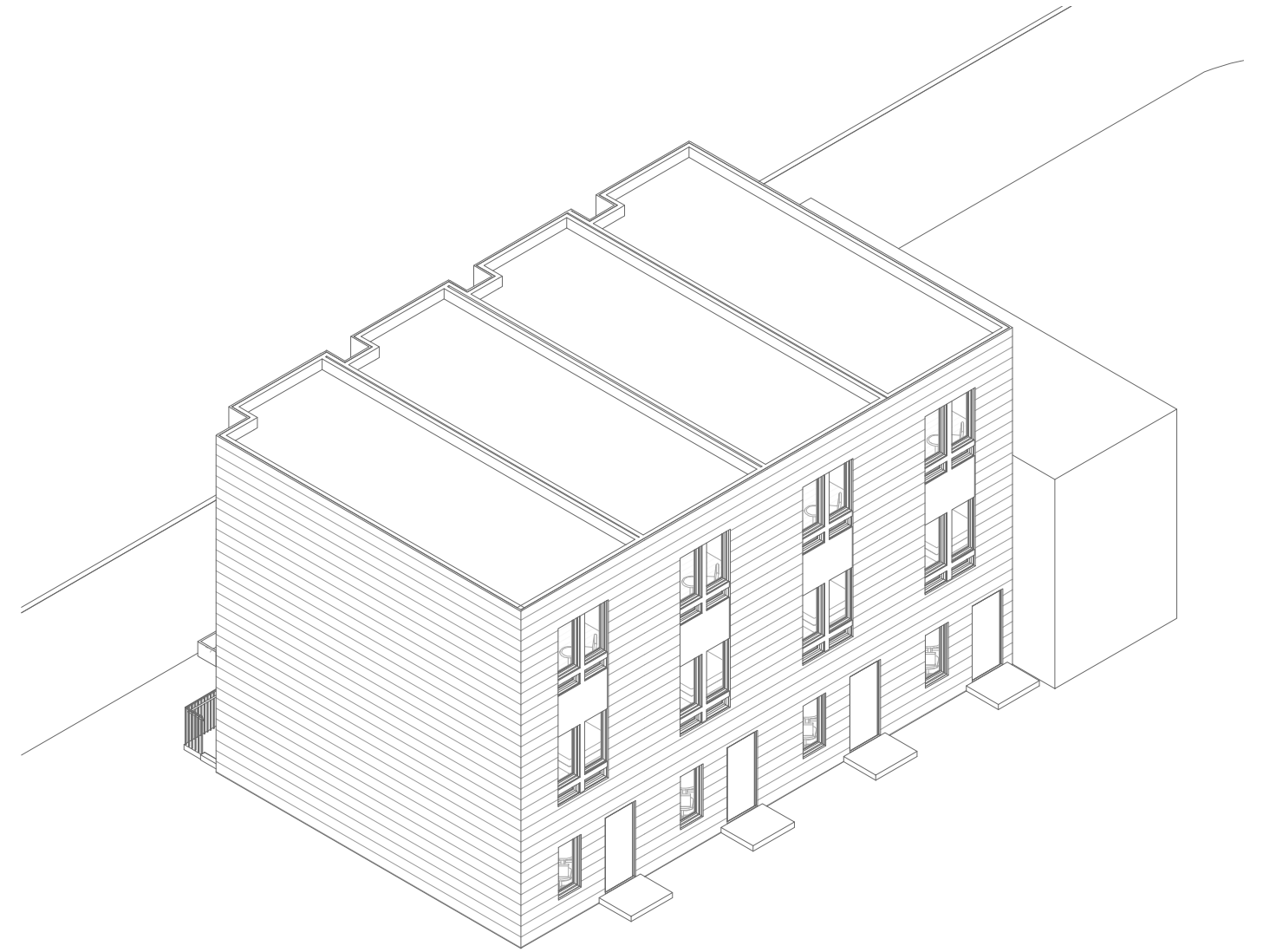
- 1 STUCCO
- 2 COLORED PANELING
- 3 7" HARDIE LAP SIDING
- 4 STANDARD DEPTH BRICK

WINDOW TOTALS





FRONT AXONOMETRIC



REAR AXONOMETRIC



VBC | STUDIO
— BOSTON —



VBC | STUDIO
— BOSTON —



FACIAL
COLOGNE

BATH BAIN
COLOGNE



VBC | STUDIO
— BOSTON —



VBC | STUDIO
— BOSTON —



